

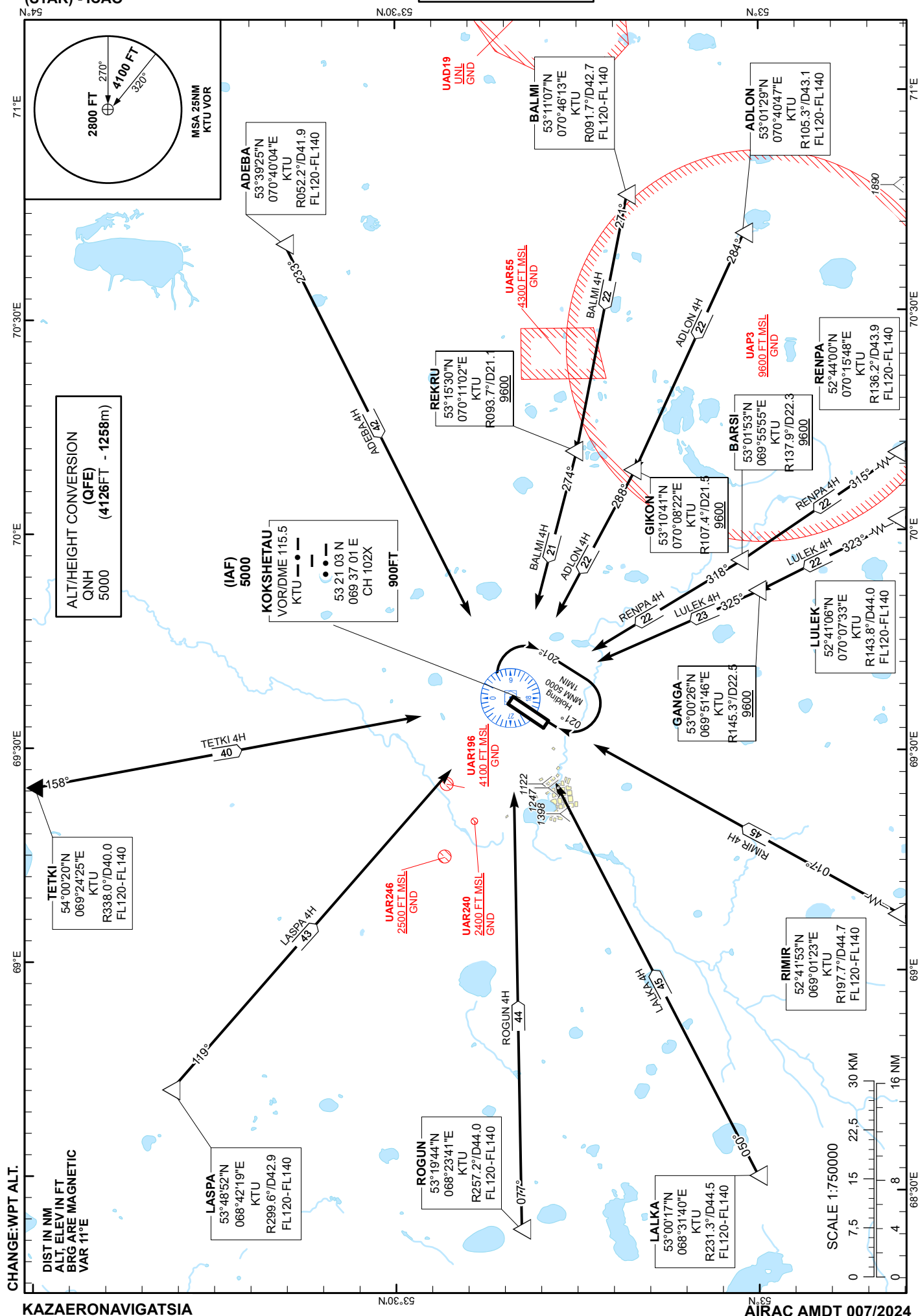
STANDARD ARRIVAL
CHART - INSTRUMENT
(STAR) - ICAO

TRANSITION ALTITUDE
10000 FT

KOKSHETAU TOWER 127.9
KOKSHETAU ATIS (EN) 134.9
KOKSHETAU ATIS (RU) 126.0

ADEBA 4H, ADLON 4H, BALMI 4H,
LASPA 4H, LULEK 4H, RENPA 4H,
RIMIR 4H, LALKA 4H, ROGUN 4H,
TETKI 4H.

KOKSHETAU
RWY 20



STANDARD ARRIVAL ROUTES INSTRUMENT (STAR) KOKSHETAU RWY 20

TETKI 4H

After crossing TETKI (R338.0° D40.0 KTU), proceed on track 158° to VOR/DME KTU.
Cross TETKI at FL120-FL140.
Cross KTU at 5000FT.

ADEBA 4H

After crossing ADEBA (R052.2° D41.9 KTU), proceed on track 233° to VOR/DME KTU.
Cross ADEBA at FL120-FL140.
Cross KTU at 5000FT.

BALMI 4H

After crossing BALMI (R091.7° D42.7 KTU), proceed on track 271° to REKRU (R093.7° D21.1 KTU).
After crossing REKRU turn RIGHT on track 274° to VOR/DME KTU.
Cross BALMI at FL120-FL140.
Cross REKRU at 9600FT or above.
Cross KTU at 5000FT.

ADLON 4H

After crossing ADLON (R105.3° D43.1 KTU), proceed on track 284° to GIKON (R107.4° D21.5 KTU).
After crossing GIKON turn RIGHT on track 288° to VOR/DME KTU.
Cross ADLON at FL120-FL140.
Cross GIKON at 9600FT or above.
Cross KTU at 5000FT.

RENPA 4H

After crossing RENPA (R136.2° D43.9 KTU), proceed on track 315° to BARSİ (R137.9° D22.3 KTU).
After crossing BARSİ turn RIGHT on track 318° to VOR/DME KTU.
Cross RENPA at FL120-FL140.
Cross BARSİ at 9600FT or above.
Cross KTU at 5000FT.

LULEK 4H

After crossing LULEK (R143.8° D44.0 KTU), proceed on track 323° to GANGA (R145.3° D22.5 KTU).
After crossing GANGA turn RIGHT on track 325° to VOR/DME KTU.
Cross LULEK at FL120-FL140.
Cross GANGA at 9600FT or above.
Cross KTU at 5000FT.

RIMIR 4H

After crossing RIMIR (R197.7° D44.7 KTU), proceed on track 017° to VOR/DME KTU.
Cross RIMIR at FL120-FL140.
Cross KTU at 5000FT.

LALKA 4H

After crossing LALKA (R231.3° D44.5 KTU), proceed on track 050° to VOR/DME KTU.
Cross LALKA at FL120-FL140.
Cross KTU at 5000FT.

ROGUN 4H

After crossing ROGUN (R257.2° D44.0 KTU), proceed on track 077° to VOR/DME KTU.
Cross ROGUN at FL120-FL140.
Cross KTU at 5000FT.

LASPA 4H

After crossing LASPA (R299.6° D42.9 KTU), proceed on track 119° to VOR/DME KTU.
Cross LASPA at FL120-FL140.
Cross KTU at 5000FT.